

Alto In the Blue of Evening

Handwritten musical score for Alto in the Blue of Evening. The score consists of 12 staves of music, with various annotations and markings. The key signature is two sharps (F# and C#), and the time signature is 4/4. The score includes several measures with circled numbers (5, 15, 25, 35, 43) and a circled word "Lead". The music features a variety of note values, including eighth and sixteenth notes, and rests. There are also some handwritten annotations such as "4", "7", "11", and "3" above certain notes or groups of notes. The score ends with a double bar line and a fermata.

2,

IN THE BLUE ...

95

2

63

71

A handwritten musical score for a piece titled "IN THE BLUE". The score is written on a 12-staff system. The first staff begins with a treble clef, a key signature of one flat (B-flat), and a common time signature. The music is written in a style characteristic of jazz or blues, featuring eighth and sixteenth notes, rests, and various ornaments. The score includes several measures with circled measure numbers: 63, 71, and 95. There are also circled measure numbers 2 and 3. The notation includes various rhythmic values, accidentals, and articulation marks. The piece concludes with a double bar line and a fermata. Below the first staff, there are several empty staves, suggesting a continuation of the piece or a separate section.

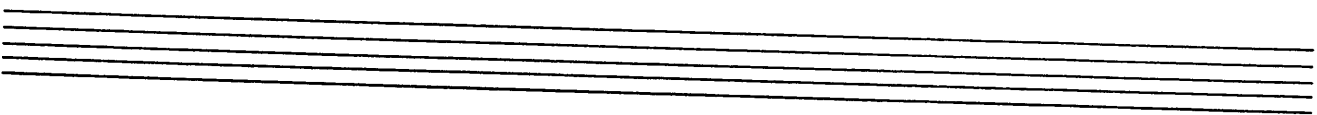
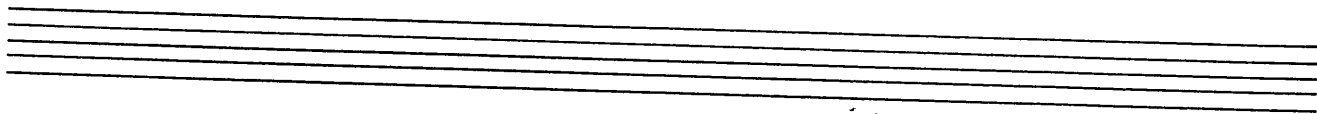
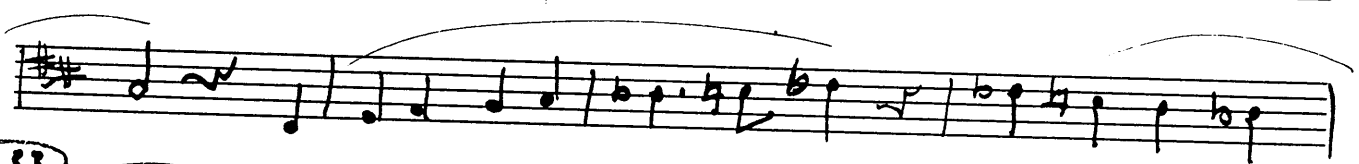
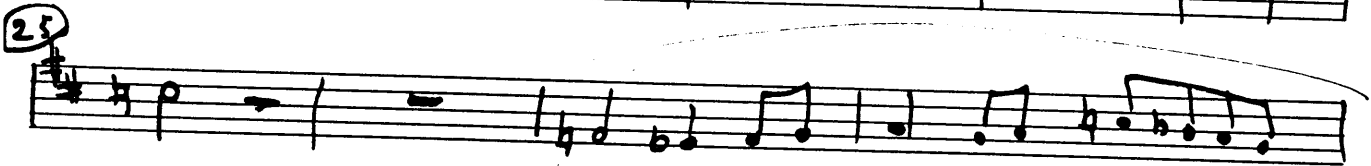
2 Alto In The Blue of Evening

Handwritten musical score for 2 Alto in The Blue of Evening. The score is written on ten staves, with the first two staves being empty. The music is in the key of D major (two sharps) and 4/4 time. It features various musical notations including notes, rests, slurs, and fingerings. Measure numbers 4, 5, 15, 25, and 42 are circled. Fingerings are indicated by numbers 1-5 above notes. A double bar line is present at measure 33. The score concludes with a repeat sign and a final double bar line.

Handwritten musical score on a 12-staff manuscript paper. The score consists of seven staves of music. The first staff begins with a circled '2' and a '2' above a measure. The second staff starts with a circled '63'. The third staff has a circled '71' at the end. The music includes various rhythmic values, accidentals, and articulation marks.

3 tenor

In the Blue of Evening



43. Solo ad lib

Chord progression: B^b E^b D^b C E^b B^b B^b

63

4 Tenors *Im the Blues of Evening*

4 5

15

25

33 9

43

Handwritten musical notation for measures 43-44. Measure 43 features a whole note chord with a '7' above it. Measure 44 features a whole note chord with a '3' above it, followed by a melodic line starting with a '2.' above it and a '2' above the first note.

63

Handwritten musical notation for measures 63-71. Measure 63 starts with a melodic line. Measure 64 has a '3' above the first note. Measure 65 has a '3' above the first note. Measure 66 has a '3' above the first note. Measure 67 has a '3' above the first note. Measure 68 has a '3' above the first note. Measure 69 has a '3' above the first note. Measure 70 has a '3' above the first note. Measure 71 has a '3' above the first note.

Four sets of empty musical staves.

Bari *in the Blue of Evening*

Handwritten musical score for Bari in the Blue of Evening. The score is written on a grand staff with two treble clefs and a key signature of two sharps (F# and C#). The music is in 4/4 time. The score consists of ten staves of music. The first staff begins with a circled measure number '4' and a circled measure number '5'. The second staff has a circled measure number '3' above the first measure. The third staff has a circled measure number '2' above the first measure. The fourth staff has a circled measure number '15' above the first measure. The fifth staff has a circled measure number '3' above the first measure. The sixth staff has a circled measure number '7' above the first measure. The seventh staff has a circled measure number '25' above the first measure. The eighth staff has a circled measure number '33' above the first measure. The ninth staff has a circled measure number '9' above the first measure. The score includes various musical notations such as notes, rests, beams, slurs, and fingerings.

43

63

71

2 part In the Blue of Evening

[cupt] [solo bill]

5 [ens.]

[open]

[unis]

33 9 43 [cupt]

IN THE BLUE OF THE EYE

63

71

Solo ad lib

3 part

In the Blue of Evening

4 (5) *cup* lead (3)

unio (15) 2

3 *open*

(25) 4 *unio*

no (33) 9

(43) *cup*

3

2 (63)

7 (71) 11

H Trump

In The Blue of Evening

4 (5) cup

2 unio

15 2

3 open

25 4 unio

~~33~~ 33 9

43 cup

3 1,

2.

7 (71) 11

1 Bone In the Blue of Evening

Lead



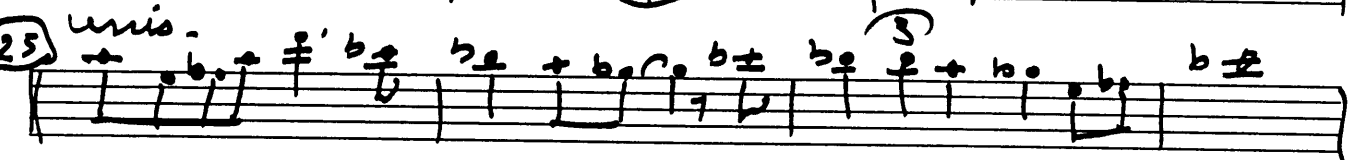
5



uniso



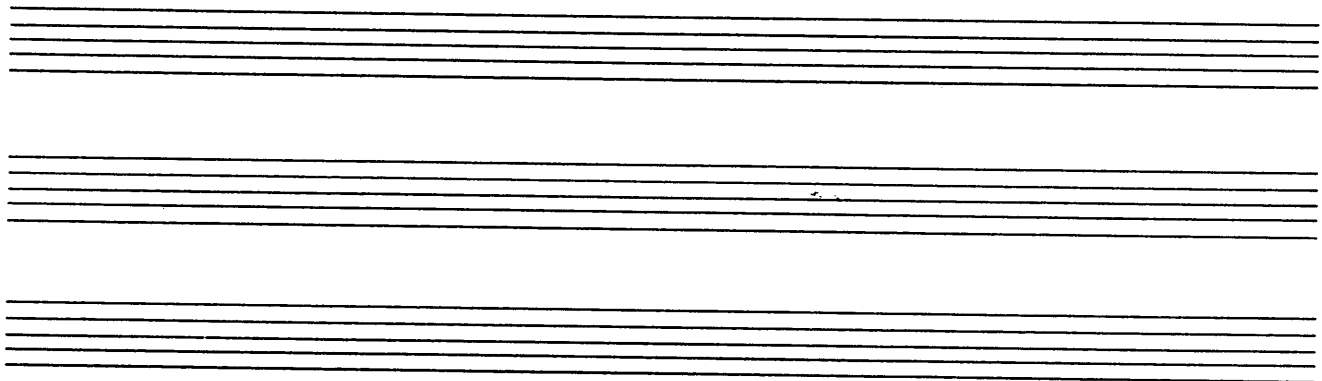

25 uniso



4



33 Lead



Handwritten musical notation on a single staff. It begins with a treble clef and a key signature of two flats (B-flat and E-flat). The notation includes several notes with stems and beams, some with accents. A circled number '43' is written above the staff. A measure rest is followed by a measure containing a whole note chord with a '4' written above it.

Handwritten musical notation on a single staff, continuing from the previous staff. It features a series of notes with stems and beams, some with accents, and a measure rest.

Handwritten musical notation on a single staff. It includes notes with stems and beams, some with accents. A measure rest is followed by a measure containing a whole note chord with a '2.' and '3' written above it.

Handwritten musical notation on a single staff, starting with a circled number '63'. It includes notes with stems and beams, some with accents. A measure rest is followed by a measure containing a whole note chord with a '2' written above it.

Handwritten musical notation on a single staff. It features a series of notes with stems and beams, some with accents, and a measure rest.

Handwritten musical notation on a single staff, starting with a circled number '71'. It includes notes with stems and beams, some with accents. A measure rest is followed by a measure containing a whole note chord with a '3' written above it. The word 'uniso' is written above the staff.

Handwritten musical notation on a single staff. It includes notes with stems and beams, some with accents. A measure rest is followed by a measure containing a whole note chord with a '3' written above it. The word 'uniso' is written above the staff.

Handwritten musical notation on a single staff. It includes notes with stems and beams, some with accents. A measure rest is followed by a measure containing a whole note chord with a '3' written above it. The word 'uniso' is written above the staff.

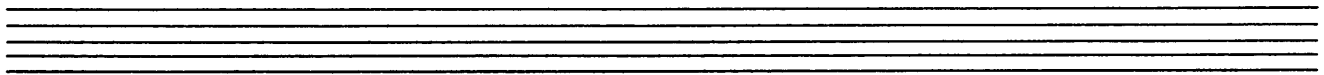
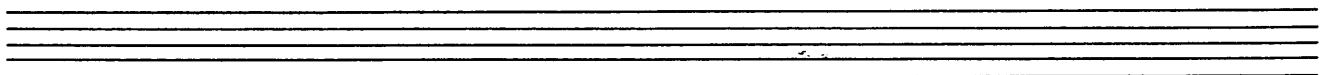
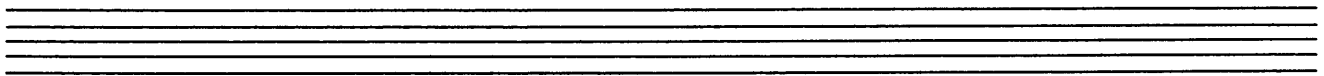
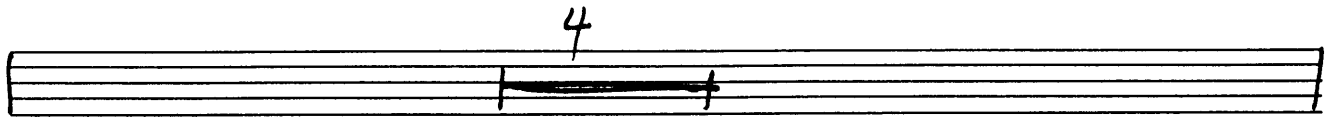
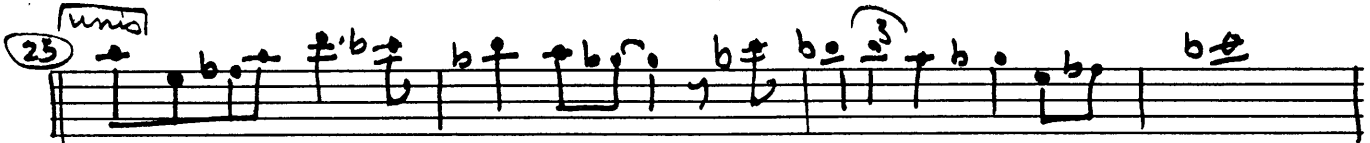
Empty musical staff.

Empty musical staff.

Empty musical staff.

Empty musical staff.

2 Bone Intro Blues of Evening



Handwritten musical notation on a single staff. It begins with a treble clef and a key signature of two flats (B-flat and E-flat). The notation includes eighth and sixteenth notes with slurs. A circled number '43' is written above the staff. A measure rest is followed by a '4' above the staff, indicating a four-measure rest.

Handwritten musical notation on a single staff, continuing the piece with eighth and sixteenth notes and slurs.

Handwritten musical notation on a single staff. It starts with a first ending bracket labeled '1.' and ends with a second ending bracket labeled '2. 3.'. The notation includes eighth notes and slurs.

Handwritten musical notation on a single staff. It begins with a circled number '63'. The notation includes a measure rest, a '2' above the staff, and various notes with slurs. There are markings 'uniso' and 'no' above the staff.

Handwritten musical notation on a single staff, featuring eighth notes and slurs.

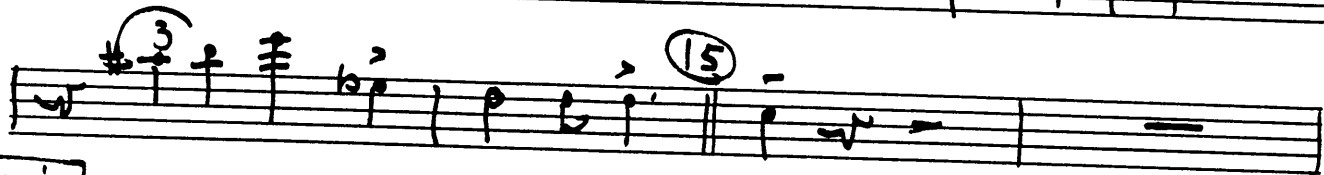
Handwritten musical notation on a single staff. It starts with a circled number '71'. The notation includes eighth notes, slurs, and markings 'uniso' and 'no' above the staff.

Handwritten musical notation on a single staff. It features a measure rest, a '3' above the staff, and notes with slurs.

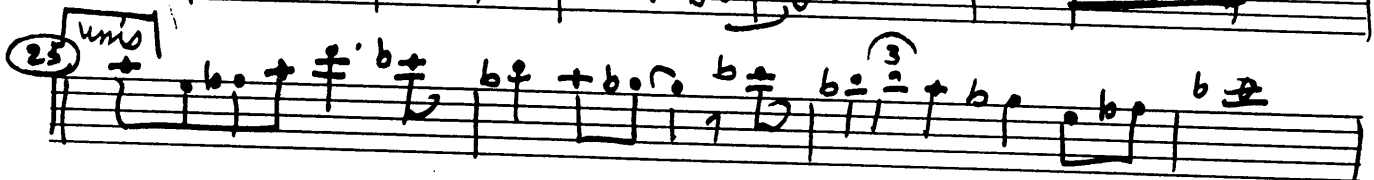
Handwritten musical notation on a single staff. It includes chords and notes with slurs.

Four empty musical staves, each consisting of five horizontal lines, provided for further notation.

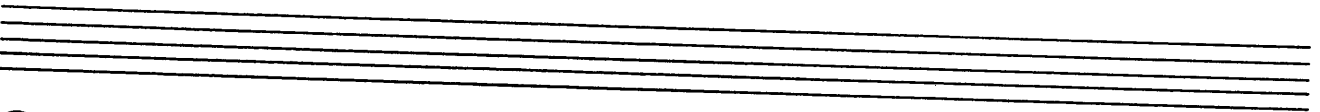
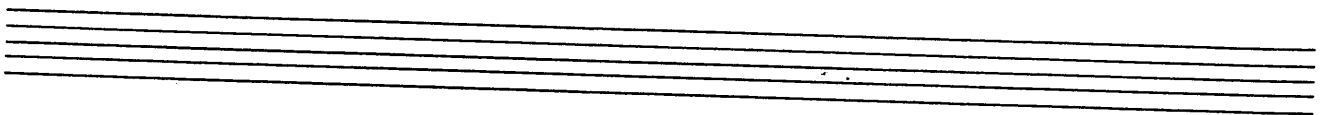
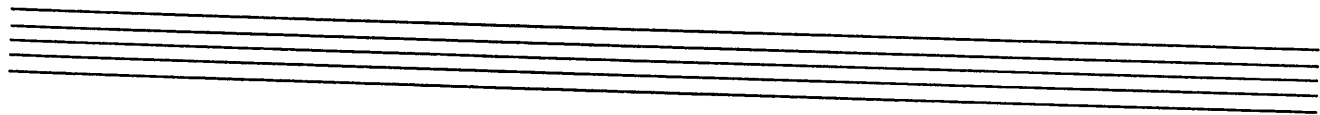
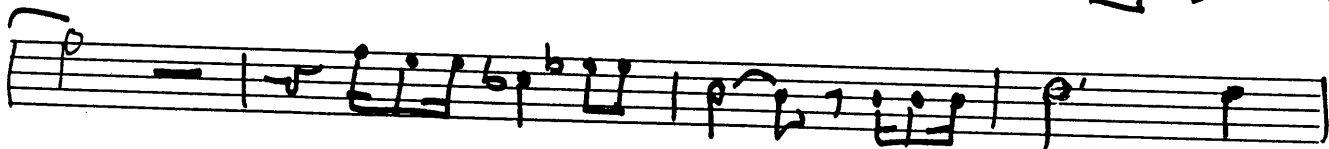
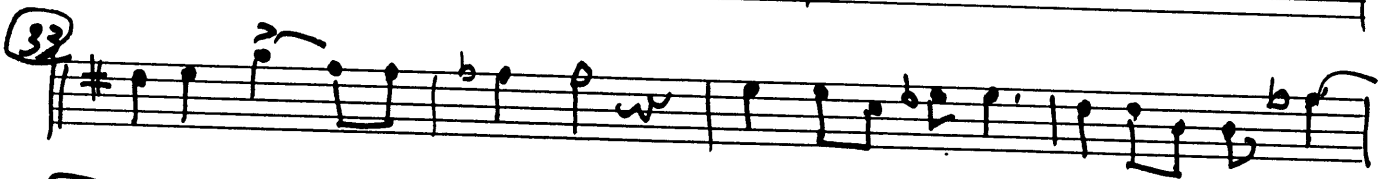
3 Bone Intro Blue of Evening

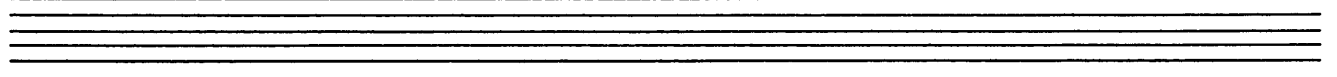
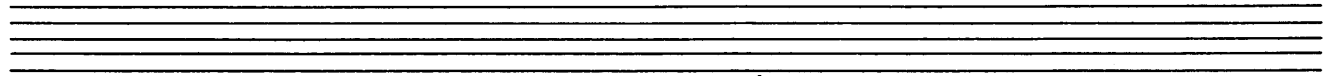
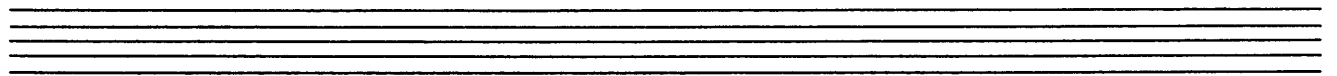
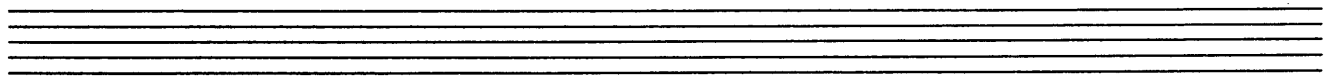
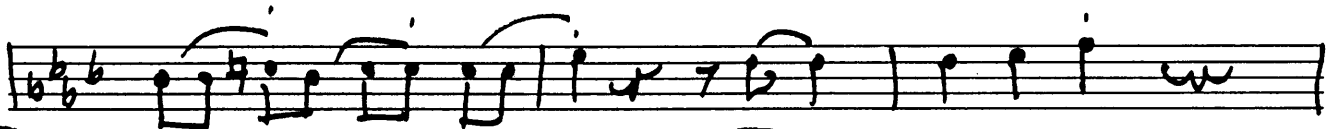


uniso



4





4 Bone In the Blues of Evening

5 6

3 15

7 5

25

4

33

Handwritten musical notation on a single staff. It begins with a treble clef and a key signature of three flats (B-flat, E-flat, A-flat). The notation includes eighth and sixteenth notes with beams. A circled number '43' is written above the staff, and a '4' is written further to the right. The staff ends with a double bar line.

Handwritten musical notation on a single staff, continuing from the previous staff. It features a treble clef and a key signature of three flats. The notation includes eighth and sixteenth notes with beams. The staff ends with a double bar line.

Handwritten musical notation on a single staff, continuing from the previous staff. It features a treble clef and a key signature of three flats. The notation includes eighth and sixteenth notes with beams. There are markings '1.', '2.', and '3' above the staff. The staff ends with a double bar line.

Handwritten musical notation on a single staff, starting with a circled number '63' and a '2' above it. It features a treble clef and a key signature of three flats. The notation includes eighth and sixteenth notes with beams. The staff ends with a double bar line.

Handwritten musical notation on a single staff, continuing from the previous staff. It features a treble clef and a key signature of three flats. The notation includes eighth and sixteenth notes with beams. The staff ends with a double bar line.

Handwritten musical notation on a single staff, starting with a circled number '71'. It features a treble clef and a key signature of three flats. The notation includes eighth and sixteenth notes with beams. There are markings '(unis)' and '(no)' above the staff. The staff ends with a double bar line.

Handwritten musical notation on a single staff, continuing from the previous staff. It features a treble clef and a key signature of three flats. The notation includes eighth and sixteenth notes with beams. There is a marking '3' above the staff. The staff ends with a double bar line.

Handwritten musical notation on a single staff, continuing from the previous staff. It features a treble clef and a key signature of three flats. The notation includes eighth and sixteenth notes with beams. There is a marking '(no)' above the staff. The staff ends with a double bar line.

Four empty musical staves, each consisting of five horizontal lines, provided for further notation.

Piano Intro Blue of Evening

Handwritten musical notation for piano, consisting of seven staves of chords and rests. The notation includes various chord symbols such as C, C^o, D-, G^o, D-, D^b7, C, A^b, E-, E^bo, D-, F-6, F-6, C, E^bo, D-, D-, G7, C, E^b-, D-, G7, C, F-, E-, E^bo, D-, G7, D7/G, G7, A^b7, C, B^b-, E^b7, A^b, D^b6, E^b7, G^b7, E^b7, B^b-, A^b, C, F-6, G7, F-6, G7, E-, E^b-, D-, D^b7, C, F-, E-, E^bo, D-, F-6, F-6, C, E^bo, D-, G7, D^b/G, G7, C, B^b-, E^b7, A7, A^b.

Three empty musical staves for further notation.

Bass *In the Blue of Evening*

C C^o D- G7 D- D^b7 C

3

F-6 C E^b

D- G7 (15) C F- E- E^b D- F-6

E- E^b D- G7 D-/G G7 A^b C B^b- E^b7

(25) A^b D^b-6 E^b7 G^b7 E^b B^b- A^b C

F-6 G7 F-6 G7 (32) F-

E- E^b D- F-6 F-6 C E^b D- G7

D-/G G7 C B^b- E^b

43

A^b D^b- C- B^o B^b- D^b-c D^b-c

Musical staff with notes and rests corresponding to the first line of text.

A^b A^b B^b- B^b- E^b7 A^b B- B^b- E^b7

Musical staff with notes and rests corresponding to the second line of text.

C, B^b- E^b7 A^b G^b- B7 (6) E A-6 B7

Musical staff with notes and rests corresponding to the third line of text.

A-6 B7 A-6 E A^b D^b-c

Musical staff with notes and rests corresponding to the fourth line of text.

(7) A^b D^b- C- B^o B^b- D^b-c

Musical staff with notes and rests corresponding to the fifth line of text.

D^b-c A^b A^b B^b- B^b- E^b7 F- B^b7

Musical staff with notes and rests corresponding to the sixth line of text.

B^b-/E^b F7

Musical staff with notes and rests corresponding to the seventh line of text.

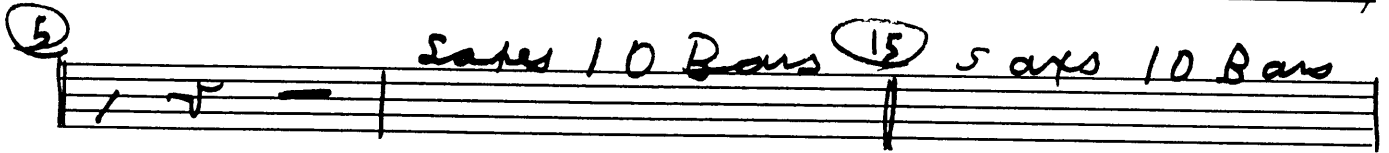
Five empty musical staves for further notation.

Drums In The Blue of Evening

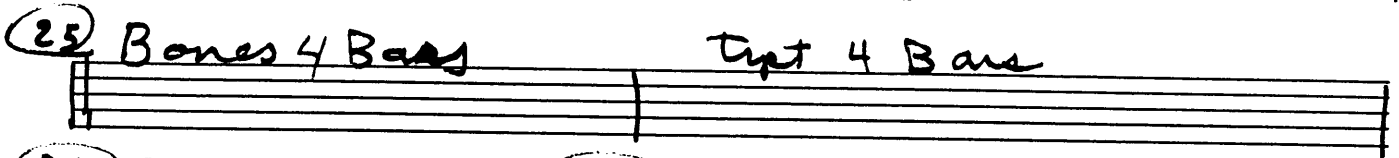
bones
brushes



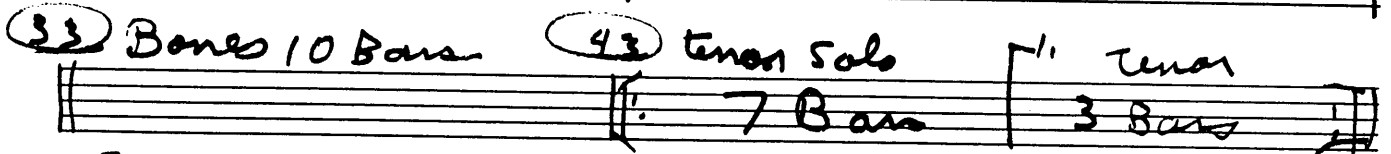
5
Sax 10 Bars 15 Sax 10 Bars



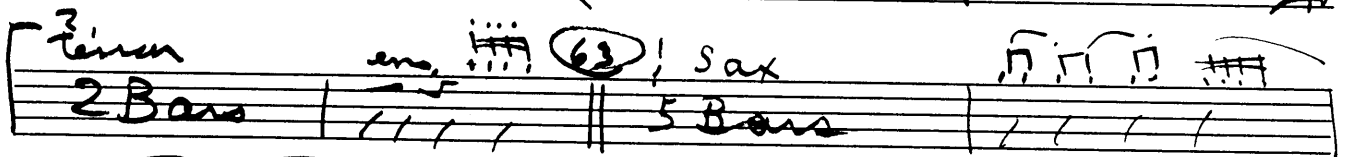
25 Bones 4 Bars Tpt 4 Bars




33 Bones 10 Bars 43 Tenor Solo 7 Bars Tenor 3 Bars



Tenor 2 Bars Sax 5 Bars



71 Tpt. Solo 10 Bars



-Sax Tpt cadenza

